



1/46 McLachlan Street Darwin City NT

2 1 1

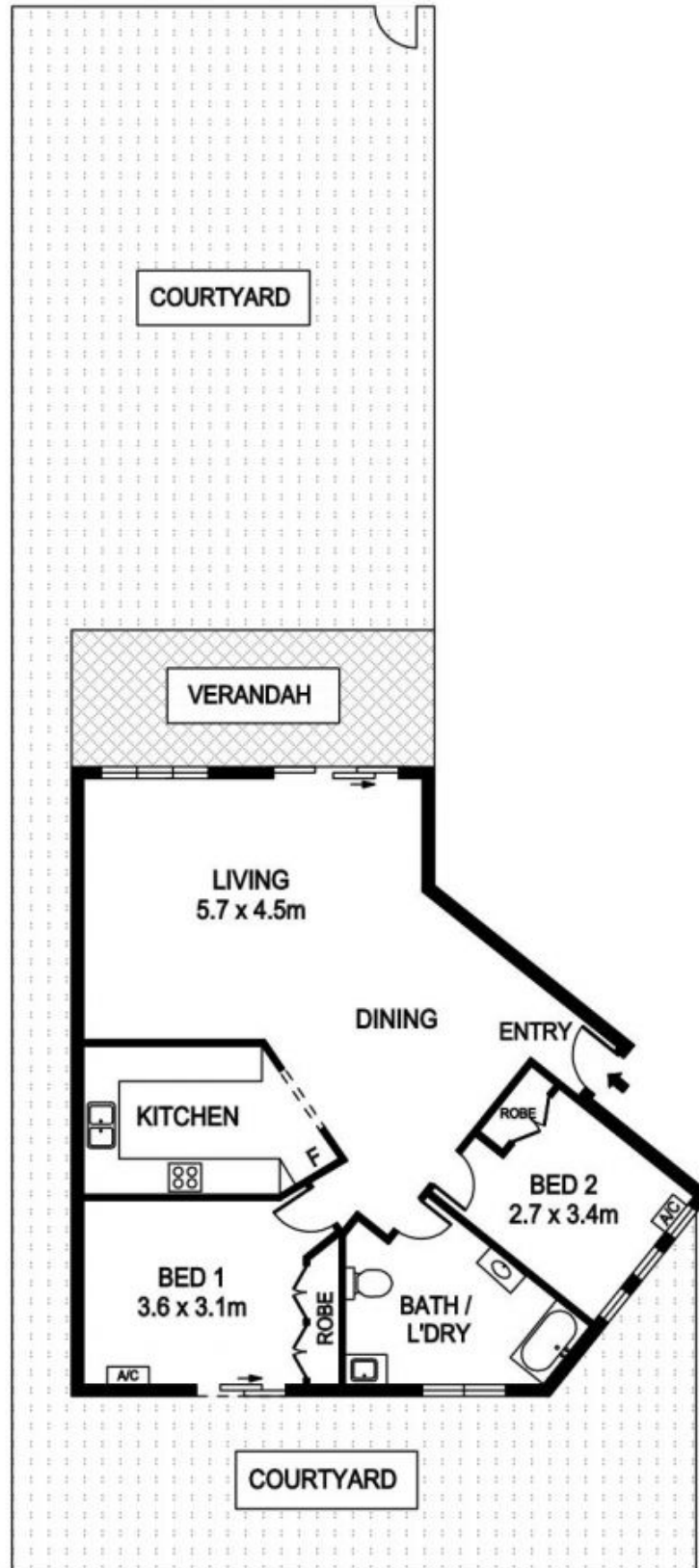
This large city apartment offers enormous potential with spacious open plan living that opens to an enormous courtyard that's a rare find in this prime CBD location, easy walking distance to all Darwin city has to offer.

- Secluded urban oasis in small complex
- Spacious open plan living dining area opens to covered patio
- Patio overlooks courtyard with lawn and established trees
- Well presented retro kitchen with breakfast bar and electric oven
- Large main bathroom with bath
- Laundry facilities discretely located in main bathroom
- Built-in robes to both generous bedrooms
- Front courtyard connects to rear courtyard via side passageway

Price : \$ 295,000
Land Size : 273 sqm
View : <https://www.northpropertynt.com.au/sale/nt-/darwin-city/residential/unit/6200072>



Kerri-Ann Laurence
08 8941 0166



1/46 MCLACHLAN STREET, DARWIN CITY

DISCLAIMER

PLANS SHOWN ARE FOR MARKETING PURPOSES ONLY, ALL DIMENSIONS ARE APPROXIMATE AND NOT TO SCALE. THEY ARE SUBJECT TO ERRORS AND INACCURACIES AND NO LIABILITY WILL BE ACCEPTED. INTERESTED PARTIES SHOULD MAKE THEIR OWN INQUIRES.