



8 Quarry Crescent Stuart Park NT

4  2  2 

Perfectly set to an impressive 966sqm allotment literally 5 minutes to the CBD is this delightfully renovated Darwin classic. Elevated to capture the cooling afternoon breezes this home epitomises the true Top End lifestyle, leaving plenty of space on the ground for gardens, lawn and of course the all essential swimming pool.

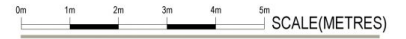
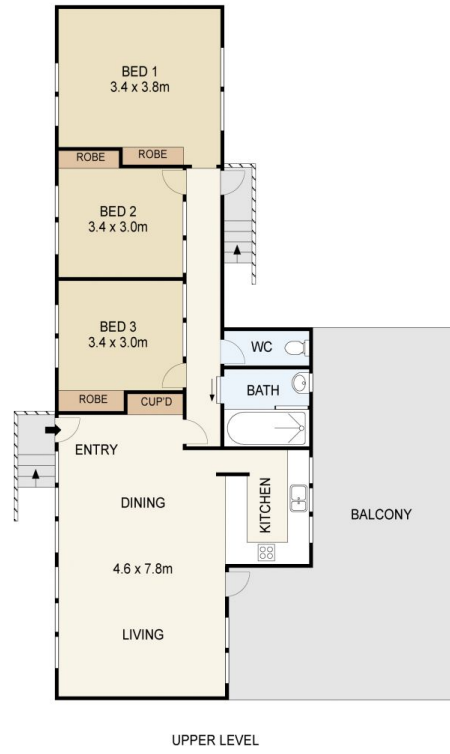
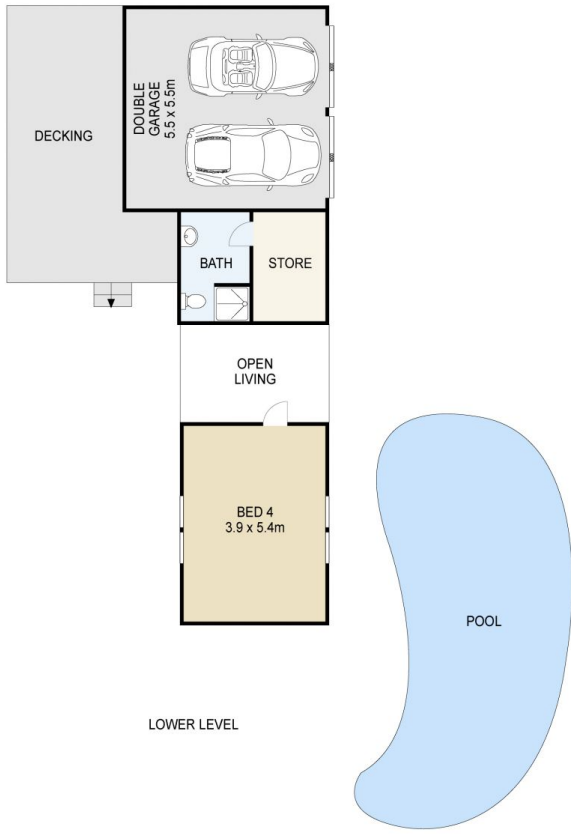
Surrounded by established tropical gardens the home is hidden from the street and on entering the property you would never believe you are so close to the city centre; that is the beauty of this location. The very tidy driveway leads to a double garage from where you can then enter your own private oasis away from the rest of the world.

In keeping with the era of the home the upstairs open plan living room is enveloped by beautiful louvre windows that create a wonderful sense of openness and of course allow the breeze to naturally circulate and freely move through the entire home. Stunning polished floorboards add a

Price : \$ 750,000
Land Size : 966 sqm
View : <https://www.northpropertynt.com.au/sale/nt/darwin-area/stuart-park/residential/house/6598692>



Kerri-Ann Laurence
08 8941 0166



PLANS SHOWN ONLY INDICATIVE OF LAYOUT DIMENSIONS ARE APPROXIMATE.

8 QUARRY STREET